

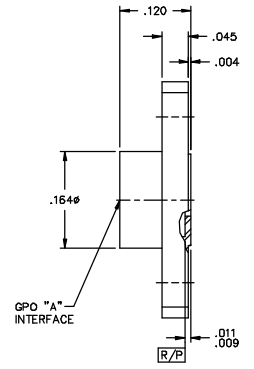
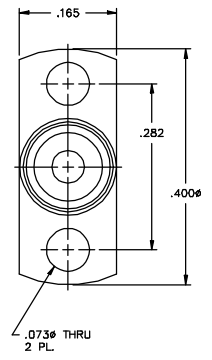
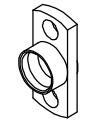
DATE REVISED: 10/20/91

CATALOG NUMBER

0119-950-3

MATERIAL AND FINISH

SHROUD: CRES 303; PASSIVATED



GPO FULL DETENT  
2 HOLE FLANGE  
MOUNT SHROUD

IDENT CODE:  
B2316  
REVISION: D

GILBERT  
ENGINEERING

SOURCE FILE: MECR# 696

DWG. NO.: OL-0119-950-3

ASSY. PROC.: AP01-009